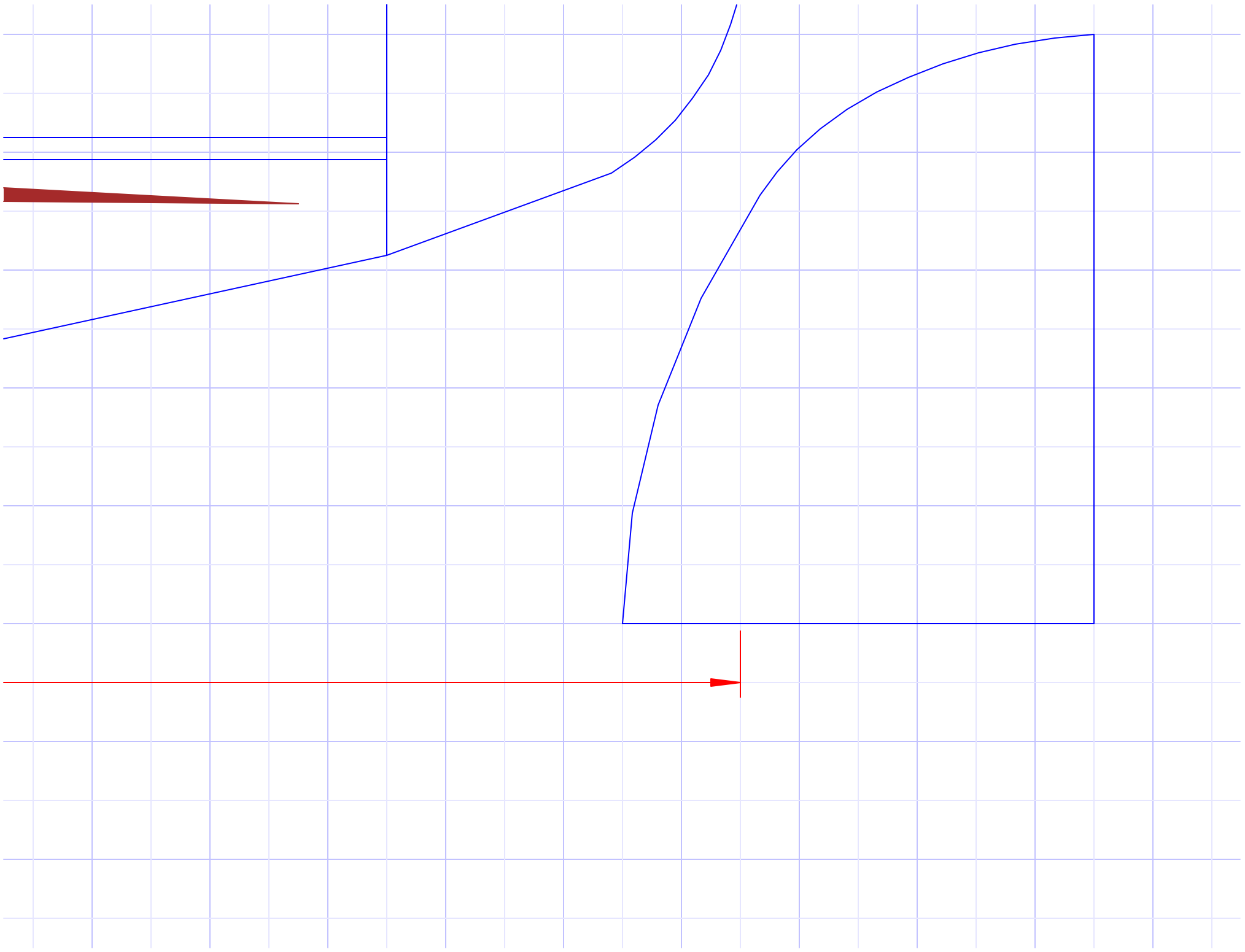


Fuse is 2 layers laminated together with 3M-77

25.000

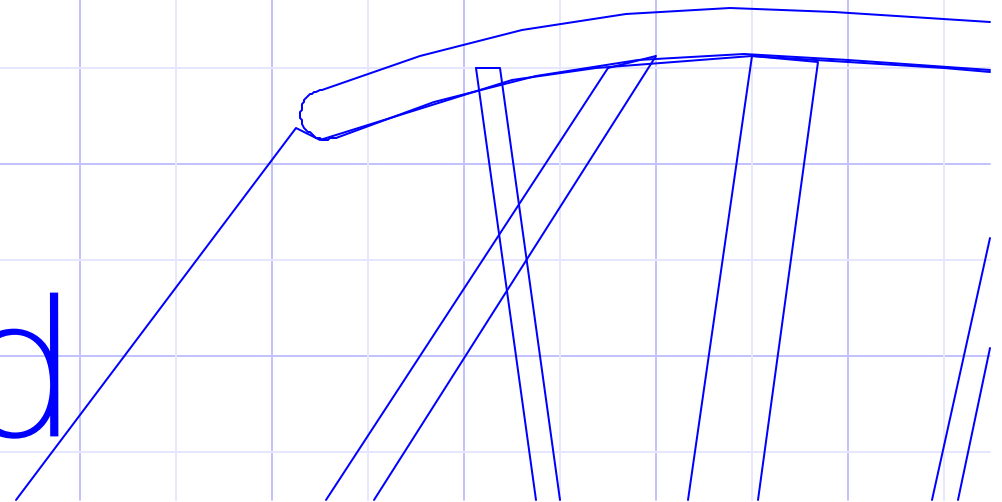




Porky Piper

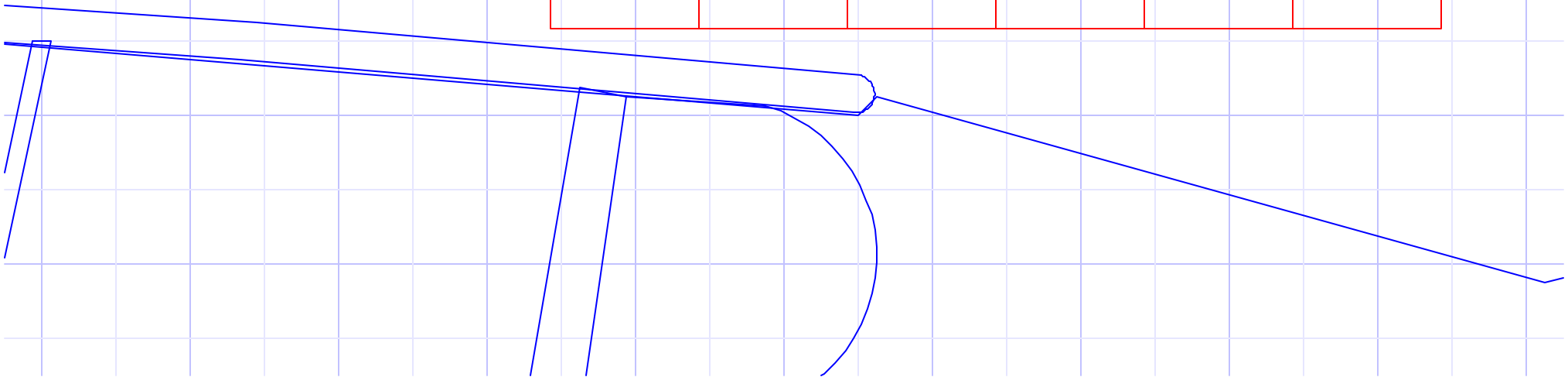
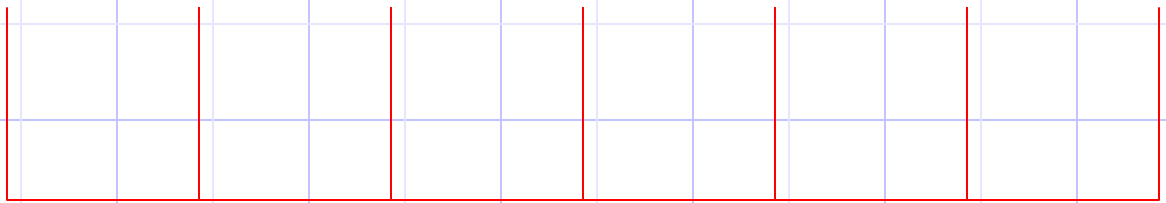
By

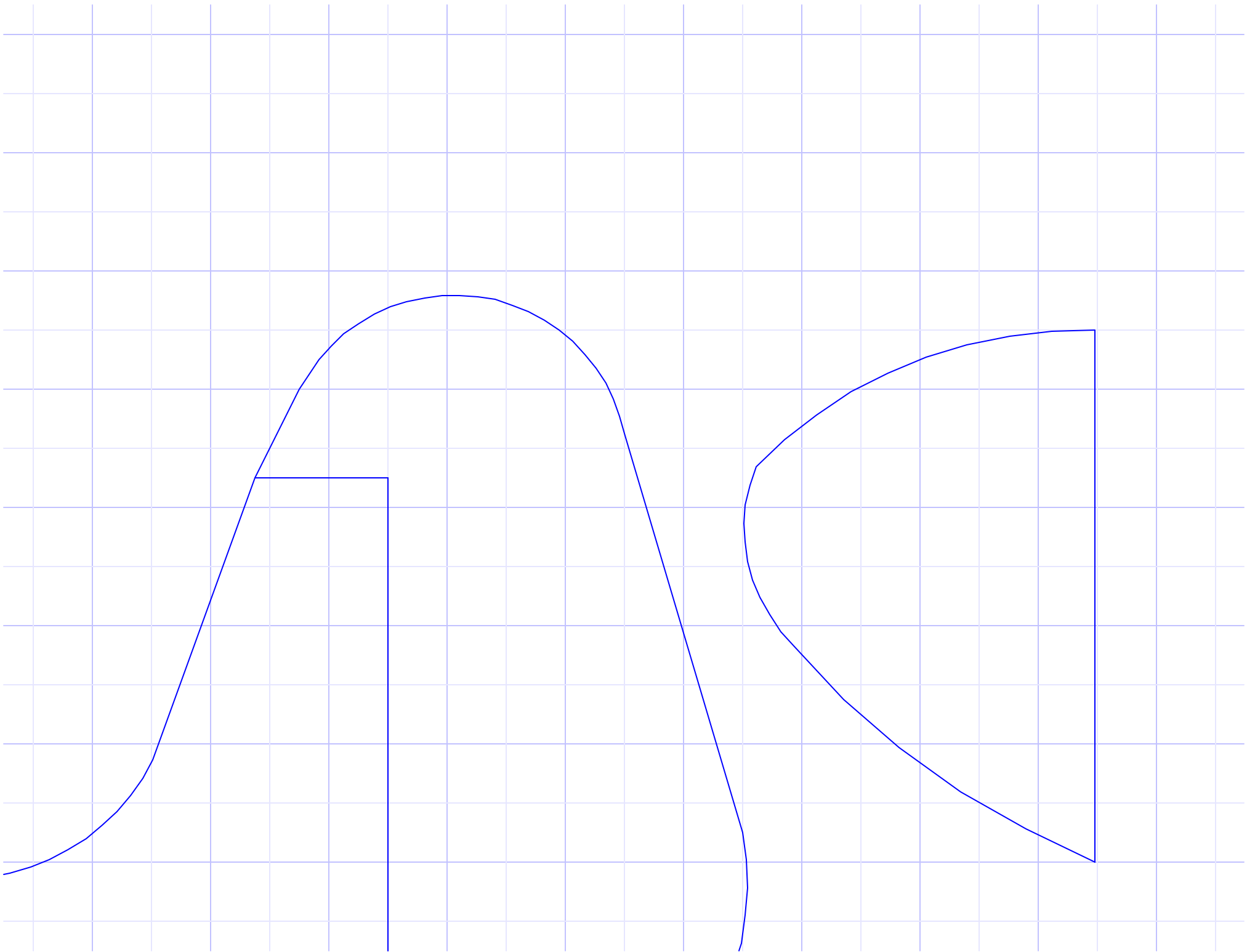
Gene Bond





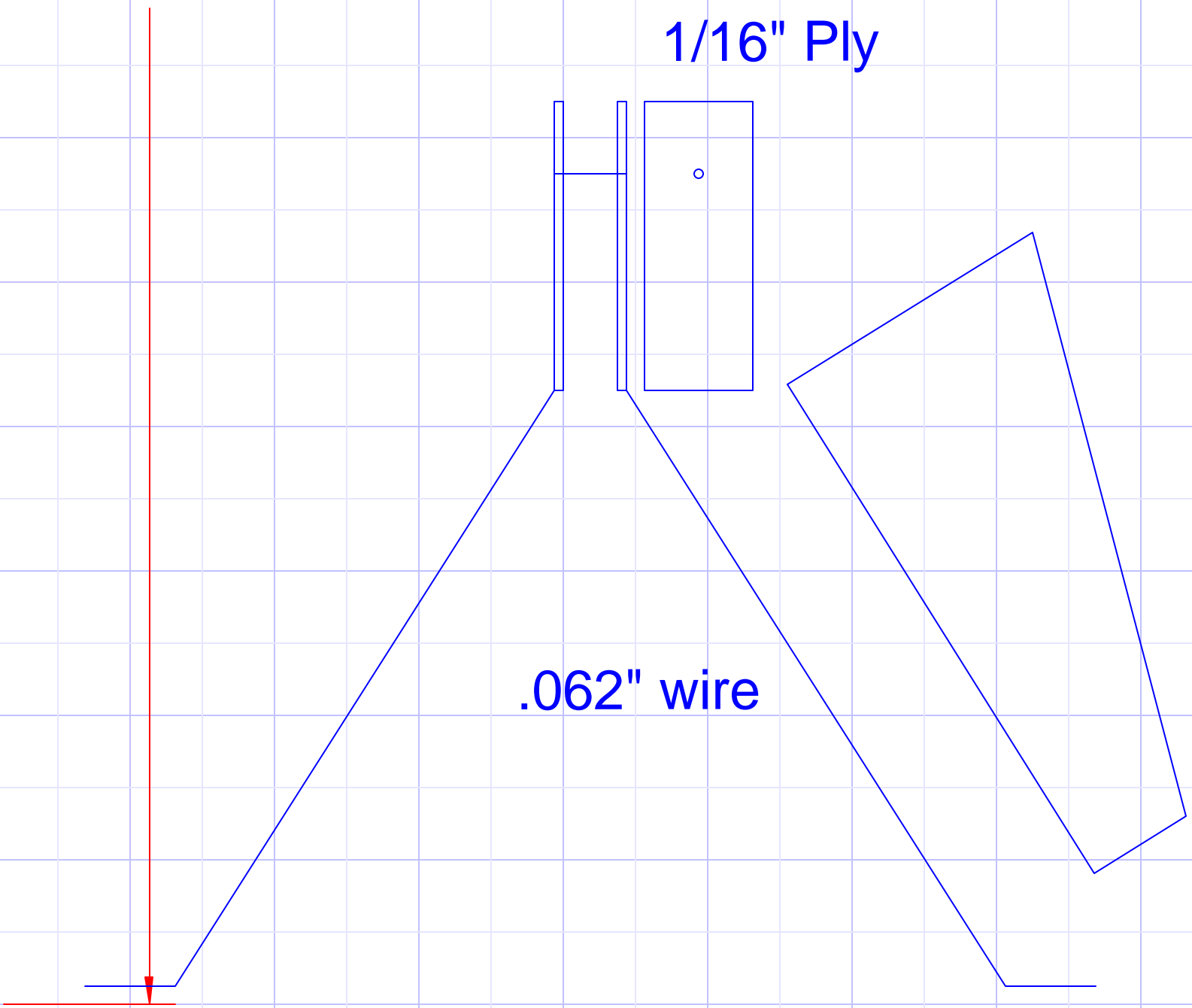
6"





1/16" Ply

.062" wire



Motor: DCM189 in GWS EPS 'C'
Prop: 1047 or 9070
Battery: 2 cell 700-1200 LiPo
Weight: 7-9oz
Wing Area ~200sqin
Wing Loading: 5-6.5oz/sf

9.500

15.000